

STUMP CUTTERS SCH/GT

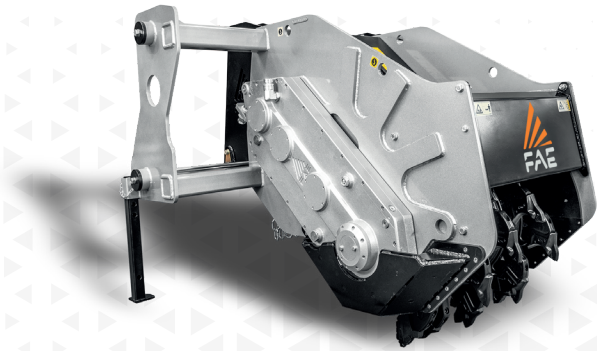
Stump cutter for PTO tractors
with fixed teeth rotor.



140-350 hp



Depth 24 in



STANDARD EQUIPMENT

Hydraulic side shifting	Gearbox with freewheel
Enclosed machine body	PTO shaft with cam clutch
Inside lateral protection	Bolted-on rotor shafts (in forged steel)
Protection chains	Welded steel counter-blades
Transmission with side gearbox	Supporting service leg

OPTIONS

Multiple tooth options	Hydraulic top link
IVT - CVT or creeper transmission strongly recommended	Forestry tires and carrier belly pan strongly recommended

MODEL	SCH/GT/ST 65	SCH/GT/DT 65	SCH/GT/DT 75
Engine (hp)	140-200	180-300	200-350
PTO (rpm)	1000	1000	1000
Working width (in)	29	29	32
Total width (in)	71	71	78
Weight (lbs)	6173	6393	8135
Rotor diameter (in)	35.4	35.4	43.3
Max working depth (in)	20	20	24
No. teeth type A/3+MH	28+4	28+4	34+4

Data refers to machine as standard set-up. Options may have reflects on weights and dimensions. The technical data in this catalogue may be altered without prior notice.

ROTOR TYPE A

NEW



A/3
(standard)

NEW



A/3/HD
(option)



F/3
(option)



MH
(side scraper)