

SOIL STABILIZERS

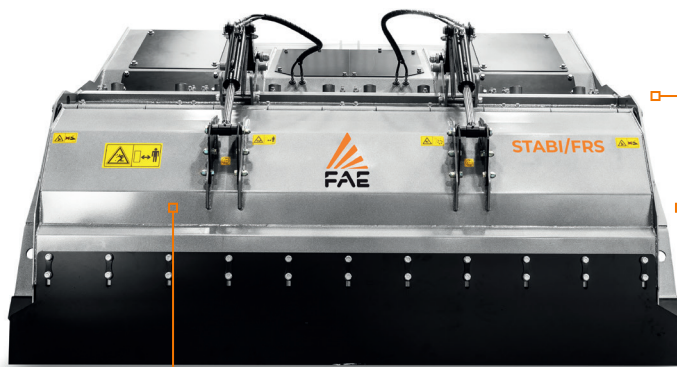
NEW

STABI/FRS - STABI/FRS/HP

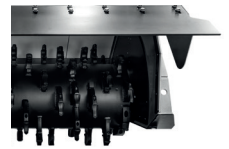
The essential tool for stabilization.

The STABI/FRS for tractors from 300 to 500 hp is the definition of the perfect stabilizer. With a fixed-rotor system and high productivity, it is stable and strong, even on very hard ground with stones. The STABI/FRS can be used on small work sites as well as for major infrastructural work, such as on highways, parking lots

and airports. The protruding rotor facilitates stabilization at depth with minimal power absorption. The crushing chamber makes it possible to work the ground to a depth of 20 in, ensuring an excellent mixing quality. The solid frame and use of wear-resistant materials provide excellent reliability over time.



Solid rotor with new design
for stabilization with low power absorption

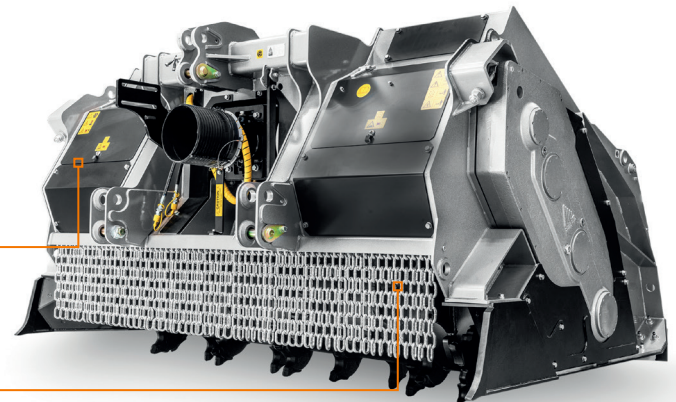


Transmission with external side reduction gears
for easy maintenance

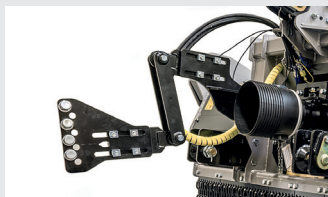
Hydraulic rear hood with new anti-clogging system
for high productivity and lower fuel consumption

Oil cooling system
for gearbox and side reduction gears (STABI/FRS/HP)

Interchangeable Hardox® internal and side guards



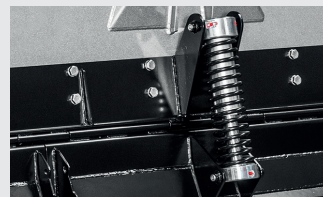
MAIN OPTIONS



W style self-aligning device
between PTO drive shaft/gearbox
allows the mulcher to work in
several angles without damaging
the PTO



Automatic FCS system
for optimal soil mixing
and moisture management



Dozing blade with springs
system to level and compact
the crushed material, creating
a uniform base



300-500 hp



Depth 20 in max



STANDARD EQUIPMENT

Hydraulic rear Hood with anti-clogging system	Gearbox with freewheel
Interchangeable inner antiwear plates in Hardox	Gearbox with oil cooling system (STABI/FRS/HP)
Enclosed machine body	PTO shaft
Inside lateral protection	Friction clutches
Protection chains	Bolted-on rotor shafts (in forged steel)
Transmission with side gearbox	Dozing blade
Side gearbox with oil cooling system (STABI/FRS/HP)	

OPTIONS

Multiple tooth options	Dozing blades with spring system
Hydraulic top link	Water spray system WSS High Flow
W style self aligning device between PTO drive shaft/gearbox	FCS full control system

IVT - CVT or creeper transmission mandatory

MODEL	STABI/FRS 225	STABI/FRS 250	STABI/FRS/HP 225	STABI/FRS/HP 250
Engine (hp)	300-400	300-400	400-500	400-500
PTO (rpm)	1000	1000	1000	1000
Working width (in)	91	101	91	101
Total width (in)	108	118	108	118
Weight (lbs)	13889	14330	14440	14881
Rotor diameter (in)	42.7	42.7	42.7	42.7
Max working depth (in)	20	20	20	20
No. teeth type A/3 + STC/FP + STC/3/FP + F3/SS/DX + F3/SS/SX	64+4+4+2+2	68+4+4+2+2	64+4+4+2+2	68+4+4+2+2

Data refers to machine as standard. The technical data in this catalogue may be altered without prior notice.

ROTOR TYPE A



A/3
(standard)



A/3/HD
(option)



F/3
(option)



F/3 R 44-42
(option)



STC/FP
(side scraper)